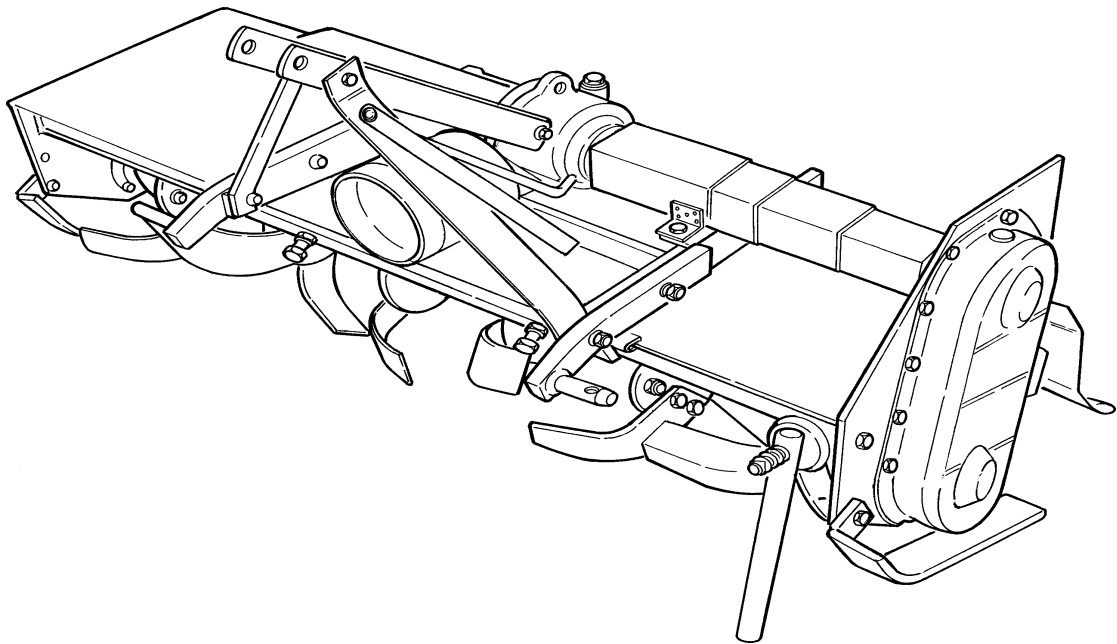


# ROTOMECH

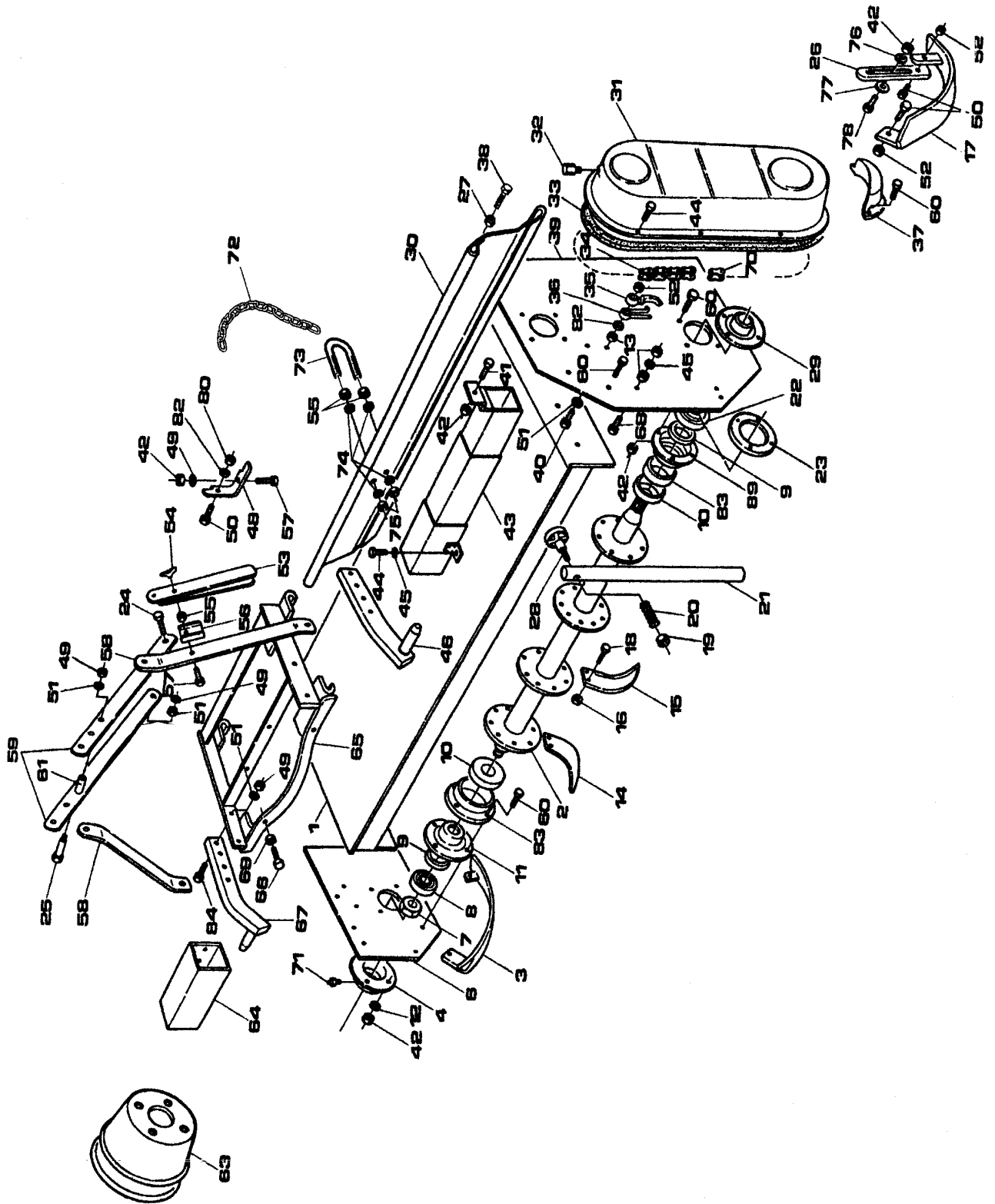
## Parts Manual

### **SIDE-SHIFT ROTARY TILLER**

50", 58", and 66" Working Width,  
Up To 40 Hp, 540 rpm



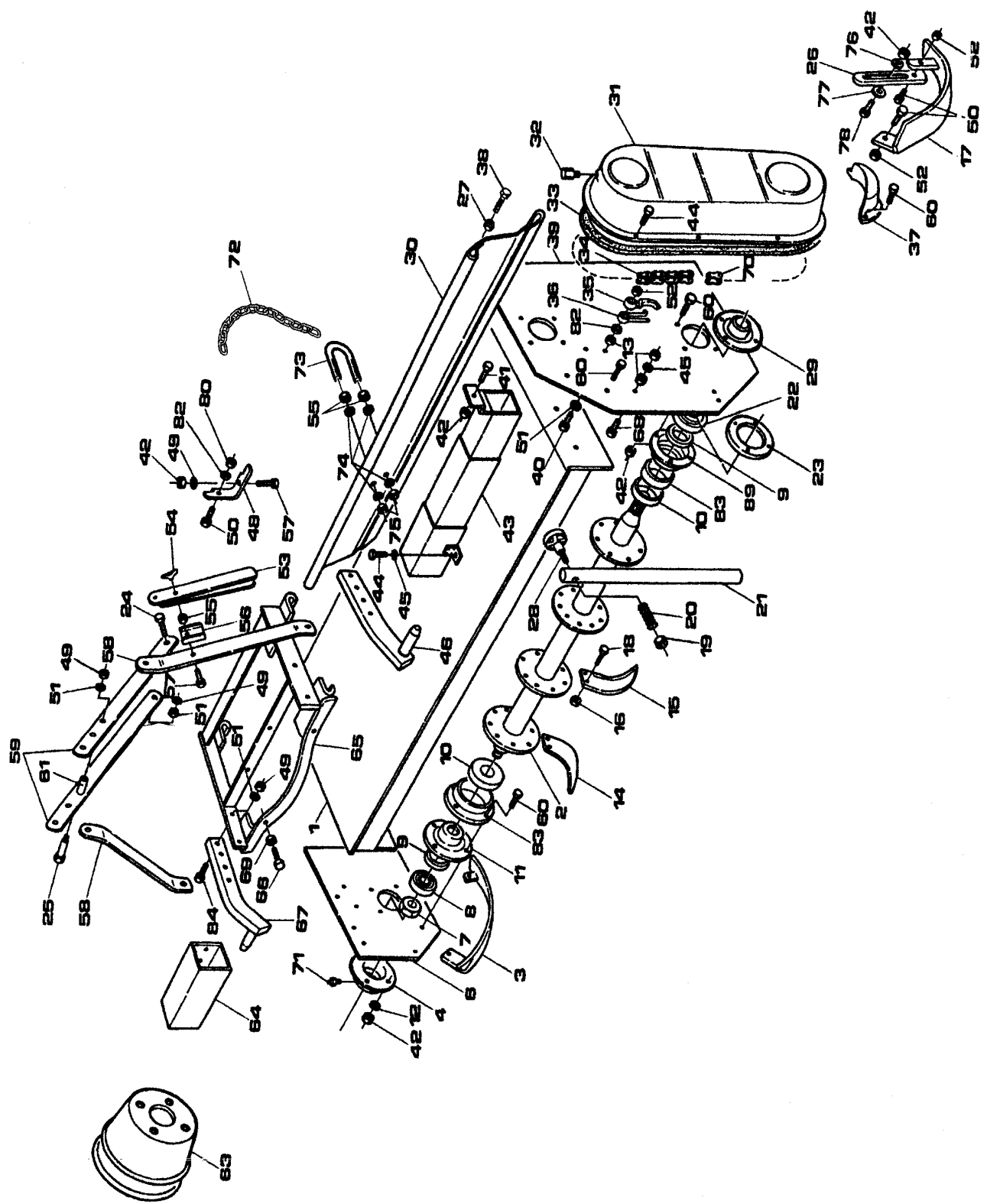
# Rotary Tiller Main Frame



Rotary Tiller  
Main Frame

ITEM	PART#	DESCRIPTION	QTY.
1	032 2002	MAIN FRAME 50"	1
	042 2002	MAIN FRAME 58"	1
	052 2002	MAIN FRAME 66"	1
2	033 4081	ROTOR 50"	1
	043 4081	ROTOR 58"	1
	053 4081	ROTOR 66"	1
	008 4081	ROTOR SUPPORT RIGHT (66")	1
	008 4105	ROTOR SUPPORT LEFT (66")	1
3	012 2051	SKID - RIGHT	1
4	003 0091	BEARING COVER - RIGHT	1
6	002 2011	RIGHT SIDE PANEL	1
7	003 0095	SAFETY NUT	1
8	003 0094	BEARING 6306	1
9	003 4098	OIL SEAL 40.60.10 (50' & 58")	2
	005 7567	OIL SEAL 40.56.8 (66")	2
10	002 2074	DIRT SHIELD	2
11	003 0092	BEARING COVER INNER	2
12	000 1011	LOCK WASHER M10	11
13	000 1010	NUT M10	15
14	003 0104D	C-KNIFE RIGHT	-
15	003 0104S	C-KNIFE LEFT	-
16	002 1105	NUT M12	-
17	022 2051	SKID - LEFT	1
18	002 1104	BOLT M12 X 30	-
19	003 0358	NUT M14	1
20	000 1176	JACK STAND SPRING	1
21	003 4324	JACK STAND	1
22	000 1061	BEARING 6307	1
23	003 4121	DISK WITH HOLES	1
24	001 5122	BOLT M12 X 90	1
25	003 4286	BOLT M12 X 100	1
26	002 1051	SERRATED ADJ. ARM	2
27	000 3124	NUT M16	2
28	002 6187	BOLT M114 X 70	1
29	003 4122	BEARING COVER LEFT	1
30	033 0303	TAILGATE 50"	1
	043 0303	TAILGATE 58"	1
	053 0303	TAILGATE 66"	1
31	001 1030	CHAIN CASE COVER	1
32	001 0035	BREATHER CAP	1
33	002 2032	GASKET	1
34	003 4141	CHAIN ASA 80 X 36	1
	013 4141	CHAIN COMPLETE (66")	1
35	003 0148	CHAIN TENSIONER	1
36	003 0158	CHAIN TENSIONER SPRING	1
37	002 2035	CHAIN PAN PROTECTION	1
38	003 0309	BOLT M16 X 70	2
39	002 2021	LEFT SIDE PANEL	1
40	003 0155	BOLT M10 X 60	1
41	000 1101	BOLT M10 X 45	1

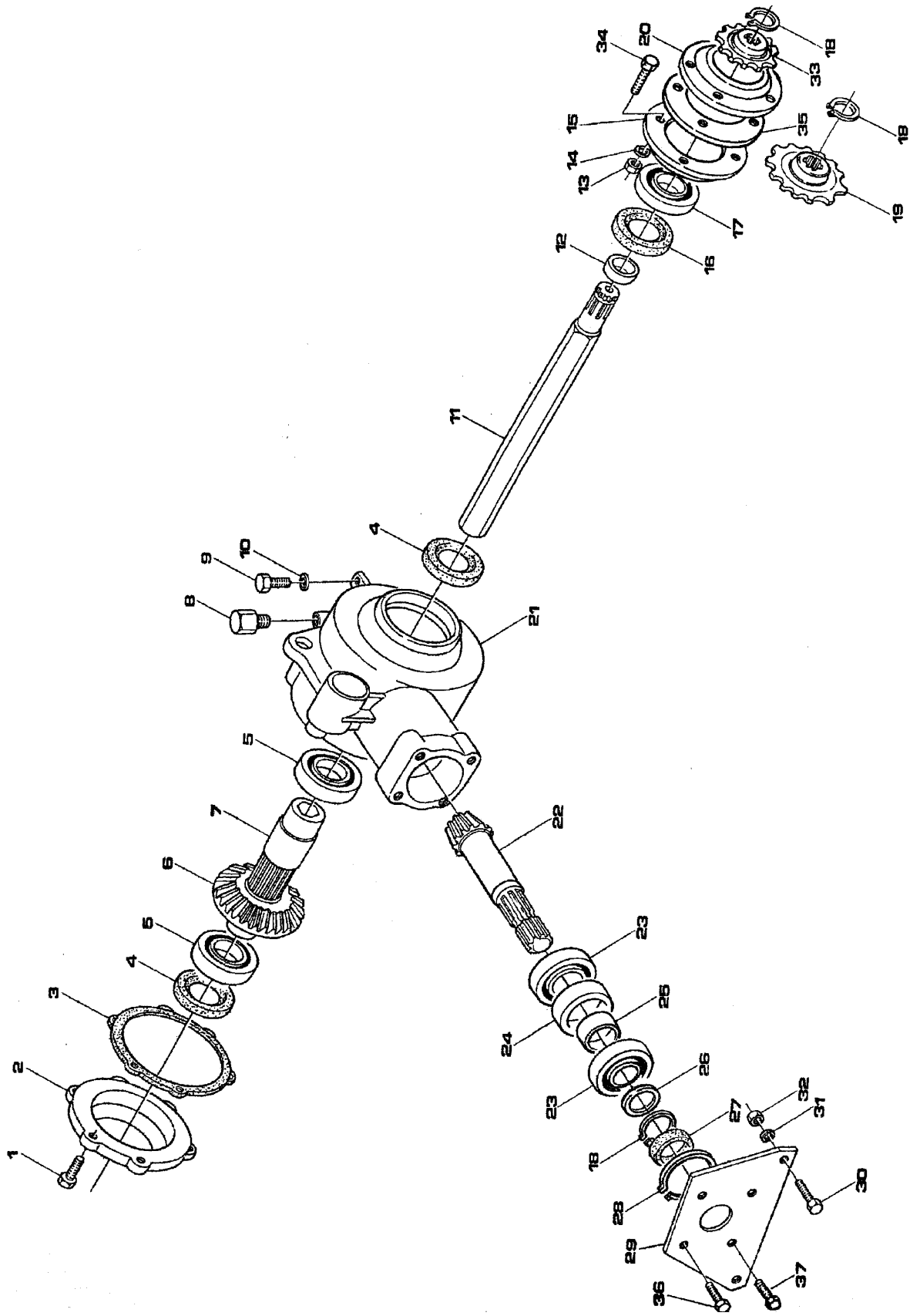
# Rotary Tiller Main Frame



**Rotary Tiller  
Main Frame**

ITEM	PART#	DESCRIPTION	QTY.
42	000 1279	NUT M10	2
43	022 1253	TELESCOPIC COVER 50" & 58"	1
	032 1253	TELESCOPIC COVER 66"	1
44	000 6349	BOLT M10 X 20	2
45	000 2034	LOCK WASHER M10	2
46	023 4261	LOWER HITCH PLATE LEFT	1
47	003 0334	BOLT M10 X 55	1
48	003 0321	CHAIN HITCH	1
49	000 3038	NUT M12	10
50	000 1278	BOLT M10 X 30	5
51	000 1077	LOCK WASHER M12	-
52	003 0156	NUT M10	4
53	001 0335	RATCHET ARM	1
54	000 1807	WING NUT M8	1
55	000 1806	NUT M8	1
56	003 0339	LOCKING COVER	1
57	003 0334	BOLT M10 X 55	1
58	003 4273	TOP HITCH SUPPORT	2
59	003 4272	TOP HITCH ARM	2
60	003 3176	BOLT M10 X 25	-
61	002 1285	SPACER	1
63	000 8663	PROTECTIVE COVER	1
64	023 0260	RIGHT PROTECTION 50"	1
	033 0260	RIGHT PROTECTION 58"	1
	043 0260	RIGHT PROTECTION 66"	1
65	002 2251	SIDE SHIFT COMPLETE 50" & 58"	1
	012 2251	SIDE SHIFT COMPLETE 66"	1
66	002 2279	BOLT M12 X 60	-
67	013 4261	LOWER HITCH PLATE RIGHT	1
68	003 0322	BOLT M10 X 50	1
69	000 1106	NUT M12	2
70	003 4450	CHAIN LINK #80 (58")	1
	003 4151	CHAIN LINK INNER	1
	009 1206	FALSE CHAIN LINK	1
71	000 1065	GREASE FITTING	1
72	001 0318	CHAIN	1
73	001 1327	U BOLT	1
74	001 5230	FLAT WASHER 8MM	4
75	001 1328	NUT M8	2
76	002 1053	WASHER WITH HOLE	2
77	002 1052	WASHER WITH THREAD	2
78	003 0331	BOLT M10 X 50	1
	013 0155	BOLT M10 X 60	1
80	001 4106	NUT 10MM	2
82	003 0157	WASHER	1
83	001 0073	EXT. COVER 50"& 58"	2
	008 4083	EXT. COVER 66"	2
84	002 1257	BOLT M12 X 60	2
	003 0054	BOLT M12 X 50	2

# Rotary Tiller Gear Box



Rotary Tiller  
Gear Box

ITEM	PART#	DESCRIPTION	QTY.
1	000 1046	BOLT M10 X 20	7
2	002 2178	GEAR COVER	1
3	002 2180	GASKET	1
4	000 2133	OIL SEAL 50.68.10	2
5	003 4178	BEARING 6010	2
6	002 1176	BEVEL GEAR	1
7	003 4175	SHAFT COUPLING	1
8	000 1107	BREATHER CAP	1
9	002 3265	BOLT M12 X 40	1
10	000 2038	LOCK WASHER M12	1
11	033 4166	HEXAGONAL SHAFT (50")	1
	043 4166	HEXAGONAL SHAFT (58")	1
	053 4166	HEXAGONAL SHAFT (66")	1
12	000 2049	SPACER	1
13	000 1279	NUT M10	6
14	000 1280	LOCK WASHER M10	6
15	003 0092	BEARING COVER INNER	1
16	003 4159	OIL SEAL 45.60.10	1
17	000 1061	BEARING 6307	1
18	004 2122	SNAP RING M35 EXT.	1
19	003 4131	SPROCKET Z14 STANDARD	1
20	003 4122	BEARING COVER OUTER	1
21	002 2170	GEAR BOX HOUSING CAST	1
22	002 1177	PINION GEAR	1
23	002 5332	BEARING 6207	1
24	003 4197	SPACER-REAR OUTER	2
25	003 4198	SPACER-REAR INNER	1
26	003 4196	SPACER-RING	1
27	503 199B	OIL SEAL 35.72.10	1
28	002 5329	SNAP RING 72 INNER	1
29	003 0218	METAL COVER	1
30	000 7255	BOLT M12 X 35	2
31	000 1077	LOCK WASHER 12MM	2
32	000 3038	NUT MM12	2
33	003 4134	SPROCKET Z11	1
34	000 1278	BOLT M10 X 30	-
35	003 4121	DISK WITH HOLES	-
36	000 1009	BOLT M10 X 35	2
37	000 1008	BOLT M10 X 30	2
	050 0606	GEAR BOX COMPLETE	-

# Rotary Tiller PTO

1	023 001E	Yoke 1 3/8 6	1
2	013 130E	Cross, Bearing	2
3	152 4045C	Outer Tube & Yoke	1
4	152 3047C	Inner Tube & Yoke	1
5	148 3037C	Yoke Shearbolt	1
6	178 4210C	Tube Bearing Outer	1
7	178 4201C	Outer Tube Rigid Cone	1
8	178 4203C	Soft Cone	1
9	178 4212C	Pin For Stop Rotation	2
10	177 3043C	Outer Shield	1
11	016 025E	Chain	2
12	187 2043C	Inner Shield	1
13	178 4202C	Inner Tube Rigid Cone	1
14	178 4211C	Tube Bearing Inner	1
15	940 3443C	Shield Complete	1
	050 0407	PTO Complete Shear pin	-

